

How to install Utility

Title	PS6000 and FP6000 Series Utility
Supported OS	Windows 10 64bit (Build version is 1809 or more.)
Description	<p>When this utility is installed on a product, the product can use the following features.</p> <p>*For details of each function, refer to the User Manual.</p> <p>Utility Name</p> <ul style="list-style-type: none">● 4G Cellular● Application Launcher● Brightness● Buzzer● Calibration● FP6 System● Front USB● Power● Shell● System● System Monitor● Touch Mode● Window Locker● Write Filter

How to install

You can select the feature you want to install.

- Industrial PC
This feature installs utilities for PS6000.
If you are not using PS6000, do not select this feature.
- Flat Panel Monitor
This feature installs utilities for FP6000.

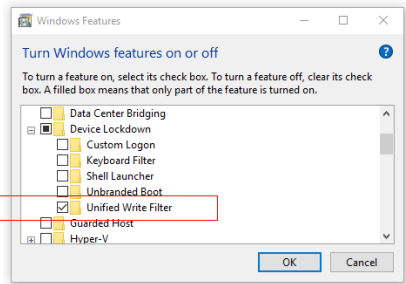


Non Pre-Install Model

If you are using a non-pre-installed model, you must set a PowerShell security policy to Allsigned before running this installer. After the installation, please undo the changed security policy.

Write Filter

When you use the Write Filter feature, you have to enable the following setting.
Control Panel > Programs > Program and Features > Turn Windows features on or off > Device Lockdown > Unified Write Filter: Enable



System Monitor

When you use the System Monitor feature, you have to the following contents.

- System Monitor Configuration section in this file.
- System Monitor in PS6000 User Manual.

Limitation

The Application Launcher layout will be partially reset when you use this installer.

How to Install

1. Download the following data from download page of “Microsoft Visual C++ Redistributable Package” and execute it. File name may be changed by Microsoft.

Installation of this module may fail if your product status doesn't require it to be installed.

Microsoft Visual C++ Redistributable Package

<https://learn.microsoft.com/en-US/cpp/windows/latest-supported-vc-redist?view=msvc-170>

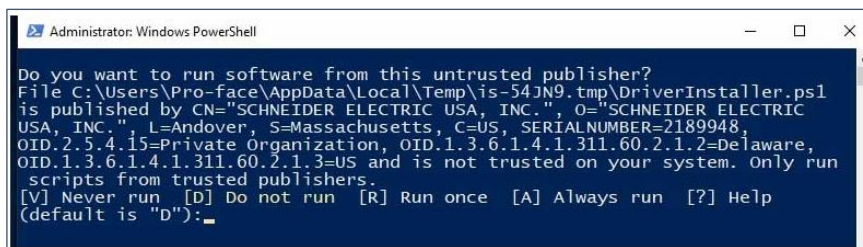
vc_regist.x86.exe

vc_regist.x64.exe

2. Execute the “dpinst.exe” in Display Communication USB Driver.zip.
3. Execute the Setup.exe in PFXP6_Driver_Installer_Ver.x.x.zip.

If you are using products other than PS6000, you don't need to execute this installer.

If you see a security policy message like the following image, please enter "A".



4. Execute Setup.exe.
5. Restart your product.

System Monitor Configuration

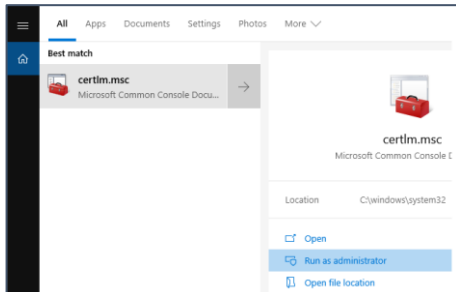
Install Node RED

1. Could you download a latest module of Node.js LTS for Windows Installer(.msi) 64bit from the following link.
<https://nodejs.org/en/download>
2. Installing Node-RED、node-red-dashboard.
Connect a product to the Internet to Execute online installation.
Open "Node.js command prompt" from the start menu and execute the following command.
> npm i -g --unsafe-perm node-red
> npm i -g node-red-dashboard
3. Installing dedicated Node for this product.
> cd "C:¥Program Files¥Schneider Electric¥Utilities¥SystemMonitor¥packages"
> npm i -g node-sep6platform-x.x.x.tgz
> npm i -g node-red-contrib-sep6psensor-x.x.x.tgz
> npm i -g node-sep6sensor-x.x.x.tgz
> npm i -g node-red-contrib-sep6platform-x.x.x.tgz
***x.x.x: Please chose latest version.**
4. Delete an existing Node-RED environment setting.
If the C:¥Users¥Username¥.node-red folder is present at this point, delete it.
5. Install Microsoft Edge.
On-line
 1. Execute the "Windows Update".
 2. Download the "Windows10.0-KB4541301-x64.cab"
 3. Execute "dism.exe /online /Add-Package /Packagepath:¥Windows10.0-KB4541301-x64.cab" on command prompt with Administrator right.
Off-line
 1. Download the "windows10.0-kb4601383-x64.msu".
 2. Download the "Windows10.0-KB4541301-x64.cab".
 3. Execute the "windows10.0-kb4601383-x64.msu".
 4. Execute "dism.exe /online /Add-Package /Packagepath:¥Windows10.0-KB4541301-x64.cab" on command prompt with Administrator right.
6. Confirmation of System Monitor launching.
Execute the Application Launcher.
"C:¥Program Files¥Schneider Electric¥Utilities¥AppLauncher¥AppLauncher.exe"
When the System Monitor icon of the Application Launcher is clicked, System Monitor is launched.

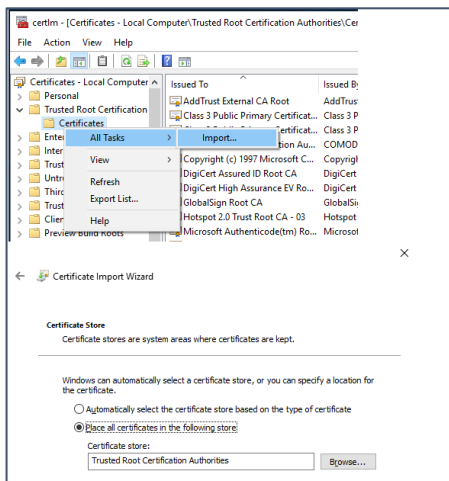
Setup certificate data

Run "certlm.msc" as an administrator.

Type "certlm.msc" in the search box and select "Run as administrator".



Import the "c:\Program Files\Schneider Electric\Utilities\SystemMonitor\cert\server.crt" to Certificates - Local Computer\Trusted Root Certification\Certificate.



After installed, localhost certificate will be appeared.

